



*the***ultimate**
collection

70mm Dual Rebate Composite Doors

WHY CHOOSE AN ULTIMATE COMPOSITE DOOR

Choosing a door for your home is a very important and difficult decision, particularly given the number of options available. You need to know you are choosing the right door for your home, a door that is as secure as it is stylish and that is designed to stand the test of time.

The Ultimate 70mm dual rebate composite door has been developed to the highest of standards, using the very best materials to ensure you get everything you are looking for and more.

Stunning Aesthetics

Ultimate doors are available in various door styles and a wide range of colours. Furthermore, there are a number of triple glazed laminated glass designs to choose from to truly personalise your door. Adding in the low maintenance and durability that comes with choosing a GRP composite door makes the Ultimate 70mm composite door a very appealing option.

Enhanced Security

Ultimate doors feature a multipoint locking system and high security hinges that combine to protect your door against unlawful intrusion. The triple glazed unit provides additional protection with 6.8mm laminated glass and 4mm toughened glass either side of the clear/decorative centre pane.

Impressive Kerb Appeal

The woodgrain finish on an Ultimate composite door is developed from oak tree grain, creating a beautiful authentic appearance. You'll find the same woodgrain effect, moulding design and exact colour match on the slim glazing cassette too, giving a seamless and elegant finish.

Superb Thermal Efficiency

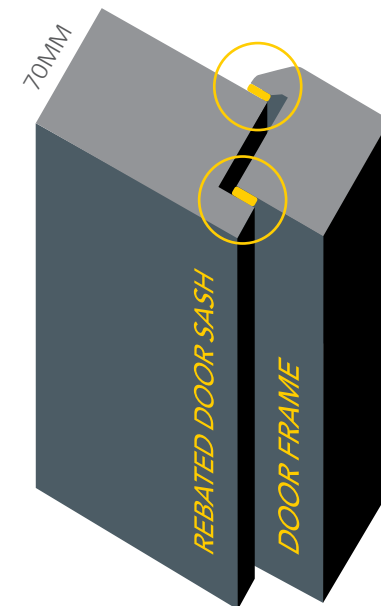
When it comes to energy efficiency, the Ultimate 70mm composite door is a smart choice, proven in independent testing to be substantially more thermally efficient than traditional timber doors and timber core composite doors. See page 4 for more information.

Ultimate Weatherproofing

Ultimate doors are dual rebated, providing an additional seal and increased weatherproofing. Water resistant polymer composite rails protect its core and help to repel water absorption which otherwise could lead to delamination of the GRP skin and cause functional problems often associated with lower quality products. Your Ultimate dual rebate 70mm composite door will keep the weather at bay and provide longer lasting protection.



THE 70MM THICK DOOR SASH IS REBATED PROVIDING INTERNAL AND EXTERNAL SEALS





Style CL02 | Chartwell Green | Kara Glass (brass caming)



Style EC02 | Distant Blue | Monza Glass (zinc caming)



Style CL01 | Traffic Grey

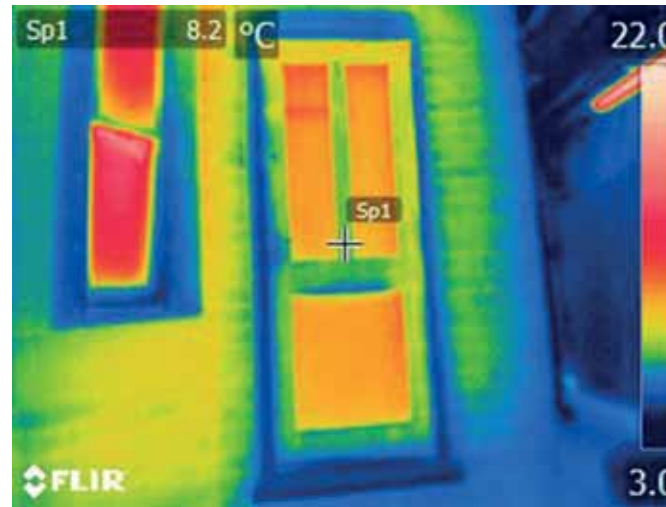
ULTIMATE ENERGY EFFICIENCY

We all worry about how much energy our homes use. The rising cost of our energy bills and our impact on the environment mean we want to keep our consumption to a minimum.

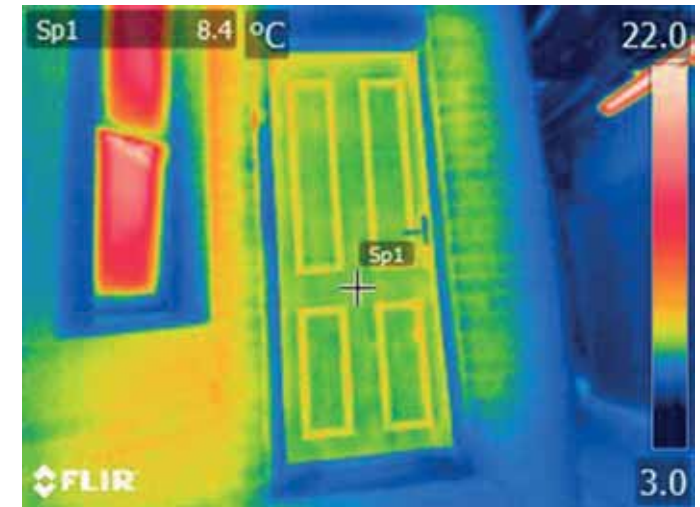
One of the best ways to do this is to choose thermally efficient products that keep warmth in and cold out, saving money and emissions.

When it comes to thermally efficient doors, Ultimate 70mm dual rebate composite doors are one of the best choices you can make.

The Ultimate dual rebate composite door is more energy efficient than a traditional timber door or a solid timber core composite door as illustrated on the thermal images shown right.

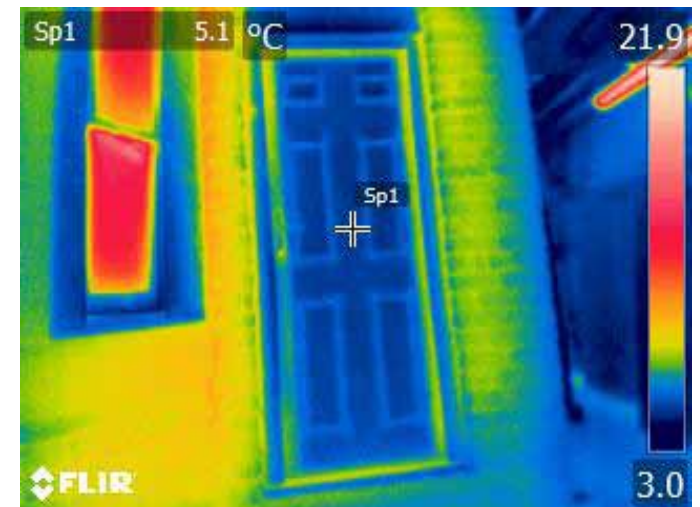


Traditional timber panelled door



Solid timber core composite door

Photographs show the thermal efficiency of each of the doors we tested. The darker the blue, the less heat is being lost. Reds and greens, the predominant colours on the timber door indicates high heat loss.



The Ultimate 70mm dual rebate composite door

ENERGY EFFICIENT

37% MORE THERMALLY EFFICIENT THAN A TIMBER PANELLED DOOR

ULTIMATE SECURITY

For your security, all Ultimate doors are fitted with a robust multipoint lock.

Simply by lifting the handle upwards, all locking features are engaged.

To prevent cylinder manipulation, Ultimate doors are fitted with a 3 star high security Yale cylinder, and for convenience all doors are supplied with 5 keys as standard.



*the***ultimate**[®]
collection

Partnership secured with **Yale**

Townhouse Lock Option

As an alternative to the standard locking system, you may wish to consider our townhouse lock option.

The townhouse lock is completed with a traditional escutcheon finger pull.

This option also includes the high security cylinder as detailed above.



Hooks & Dead Locks

Outer/inner facing hook locks and dead locks provide strength and security.



Compression Rollers

Ultimate doors include roller cams to ensure a tight seal.



Hinges

3 high security, anti-lift hinges. Multiple colour options.

SLEEP TIGHT

Ultimate 70mm composite doors feature a double rebate, they are 57% thicker than a standard door and have a high density core which not only makes your home energy efficient, but is also proven to reduce the impact of outdoor noise in your home.

Every Ultimate 70mm composite door also features 50mm triple glazing to further improve the acoustic insulation of your home.



DOOR COLOUR RANGE

STUNNING AESTHETICS

CHOOSE FROM OUR VARIED COLOUR RANGE

White



RAL 9016
White

Standard Colour Range



RAL 9005
Black



NCS S 3560-Y90R
Red



RAL 5004
Blue



RAL 6009
Green



Distinction
Anthracite Grey

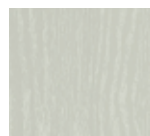


Distinction
Chartwell

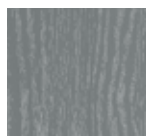
Extended Colour Range



RAL 7035
Light Grey



RAL 7044
Silk Grey



RAL 7042
Traffic Grey A



RAL 7005
Mouse Grey



RAL 7021
Black Grey



BS 04 B 21
Sable



BS 08 B 17
Honey Beige



RAL 9001
Cream



BS 08 B 15
Magnolia



RAL 1020
Olive Yellow*



RAL 1033
Dahlia Yellow*



RAL 1021
Rape Yellow*



BS 16 C 33
Duck Egg



RAL 6034
Pastel Turquoise



RAL 5024
Pastel Blue



RAL 5018
Turquoise Blue



RAL 5011
Steel Blue



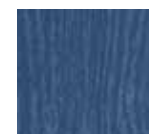
RAL 5002
Ultramarine Blue



RAL 5009
Azure Blue



RAL 5015
Sky Blue



RAL 5023
Distant Blue



RAL 6002
Leaf Green*



RAL 6024
Traffic Green*



RAL 6019
Pastel Green*



BS 04 B 17
Dusty pink



RAL 4009
Pastel Violet*



RAL 4005
Blue Lilac



RAL 4008
Signal Violet



RAL 4007
Purple Violet



RAL 3005
Wine Red



RAL 4002
Red Violet



RAL 3003
Ruby Red



RAL 3020
Traffic Red*



RAL 2002
Vermilion

Bespoke Colour Range



RAL 7038
Agate Grey*



RAL 7032
French Grey*



RAL 1015
Ivory*



RAL 7015
Slate Grey*



RAL 7155
Moondust Grey*



RAL 8022
Black Brown*

Have your door spray painted in the bespoke RAL Colour of your choice (the above colour examples are for your guidance only).

Colours shown in this brochure should be used for guidance only as the limitations in photographic and printing processes may mean that colours of products vary from those illustrated.
*5 year surface warranty applies. All other colours carry a 10 year surface warranty. Any reference to RAL colours are provided for guidance only and are not guaranteed an exact match.

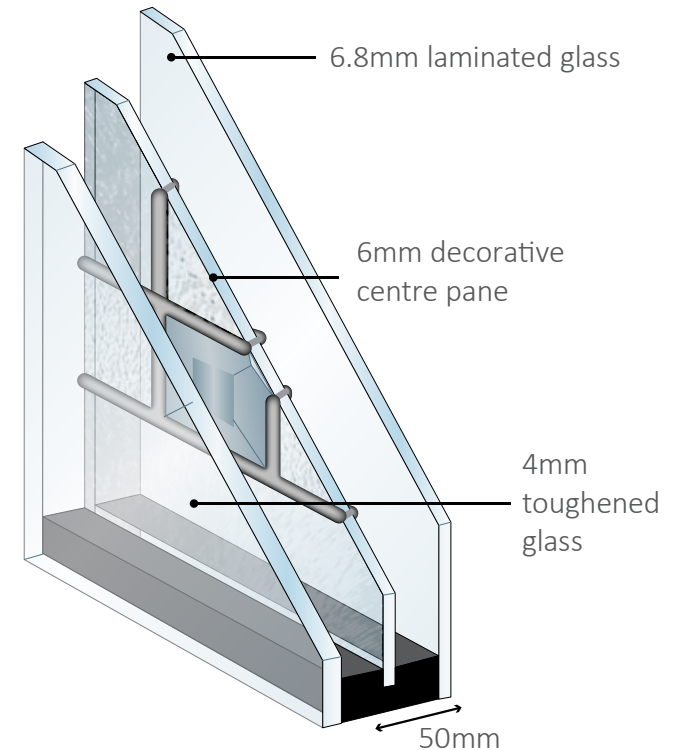
GLASS OPTIONS

Decorative Glass Options

Your choice of decorative laminated glazing panels is the perfect finishing touch and a beautiful focal point.

Each design perfectly complements our door styles and creates a stylish finish. All have slim sightlines to maximise light transmission and their frame uses the same moulding design and woodgrain effect as the rest of the door for a sophisticated and seamless finish.

Each glass unit is 50mm in thickness and all of the designs are triple glazed, so the delicate decorative panel is encapsulated between two clear panes.



Kara

Decorative triple glazing featuring glue chip backing glass with clear bevels and brass or zinc caming.



Monza

Decorative triple glazing featuring grey bevels and textured glass.



Aspen

Decorative triple glazing featuring grey bevels and textured glass.



Edwardian

Decorative triple glazing featuring various coloured and textured glass.

Obscure Glass Options

You may prefer not to have one of the above decorative glass options and instead choose either clear glass or one of the 4 obscure glass options shown right. These will also be 50mm triple glazed units to the same specification shown above, but with the middle pane either clear or in the obscure pattern of your choice.



Stippolyte



Contora



Minster



Cotswold



Style CL01 | Traffic Grey

CLASSICAL 6 PANEL SOLID

Far from being just the safe choice, a Classical 6 Panel Solid door is the ultimate expression of confidence.

Without decorative glazing to draw the eye you can focus on the beautiful woodgrain finish.

KERB APPEAL

IMPRESSIVE WOODGRAIN FINISH
DEVELOPED FROM OAK TREE GRAIN



Style CL01 | Black



White inside

CLASSICAL

The Classical design is perfect when you want your door to have decorative glazing but also want to maintain your privacy. The crisp clean lines create a classic, elegant look.

GLASS PATTERNS AVAILABLE



Kara

Glue chip backing glass with clear bevels and brass or zinc caming



Monza

Grey bevels with various textured glass pieces and zinc caming



Aspen

Grey bevels with various textured glass pieces and zinc caming

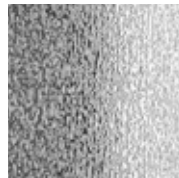


Edwardian

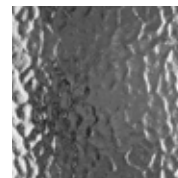
Various coloured and textured glass pieces with zinc caming



Stippolyte



Contora



Minster



Cotswold



Style CL02 | Blue | Monza Glass (zinc caming)

CLASSICAL HALF GLAZED

This traditional six-panelled design has an attractive glass design that flows between the panels, creating a sophisticated and stylish appearance while still allowing the light to flood in.



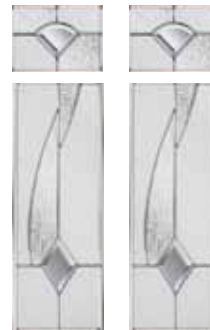
Style CL03 | White | Kara Glass (brass caming)

GLASS PATTERNS AVAILABLE



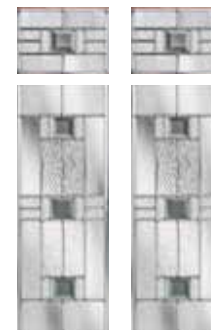
Kara

Glue chip backing glass with clear bevels and brass or zinc caming



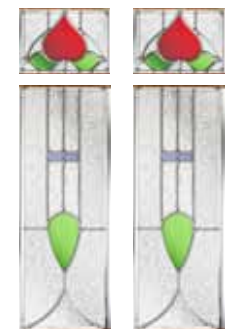
Monza

Grey bevels with various textured glass pieces and zinc caming



Aspen

Grey bevels with various textured glass pieces and zinc caming



Edwardian

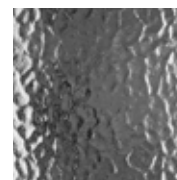
Various coloured and textured glass pieces with zinc caming



Stippolyte



Contora



Minster



Cotswold

ECLAT

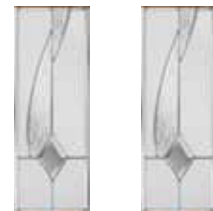
The pleasing combination of glass shapes on the Eclat door makes your front door a focal point for the eye, making a beautifully welcoming statement.

GLASS PATTERNS AVAILABLE



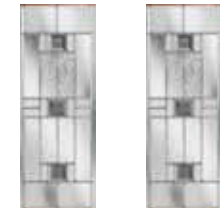
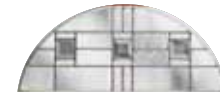
Kara

Glue chip backing glass with clear bevels and brass or zinc caming



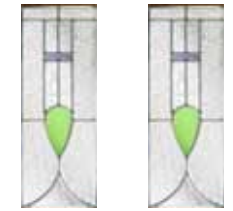
Monza

Grey bevels with various textured glass pieces and zinc caming



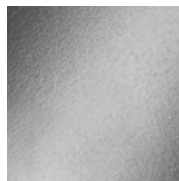
Aspen

Grey bevels with various textured glass pieces and zinc caming

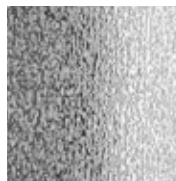


Edwardian

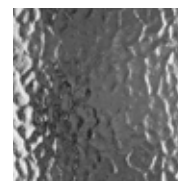
Various coloured and textured glass pieces with zinc caming



Stippolyte



Contora



Minster



Cotswold



Style EC01 | Dusty Pink | Monza Glass (zinc caming)

ECLAT ARCH

When your door needs to offer privacy, the Eclat Arch is the perfect choice. The decorative glass arch adds interest without revealing what's beyond.



GLASS PATTERNS AVAILABLE



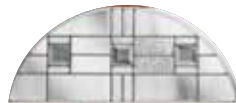
Kara

Glue chip backing glass with clear bevels and brass or zinc caming



Monza

Grey bevels with various textured glass pieces and zinc caming



Aspen

Grey bevels with various textured glass pieces and zinc caming



Edwardian

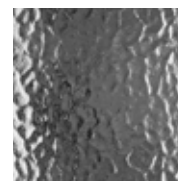
Various coloured and textured glass pieces with zinc caming



Stippolyte



Contora



Minster



Cotswold

ELEGANCE

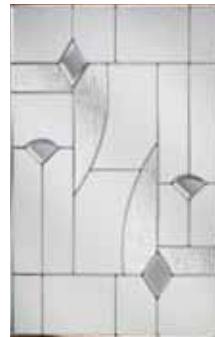
Our Elegance design is equally popular as a front door and a back door. It maximises the light that floods into your home, while its classically simple lines are perfect when you want understated perfection.

GLASS PATTERNS AVAILABLE



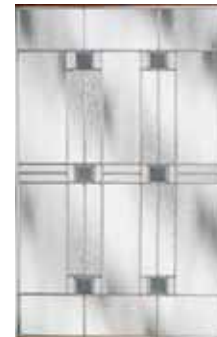
Kara

Glue chip backing glass with clear bevels and brass or zinc caming



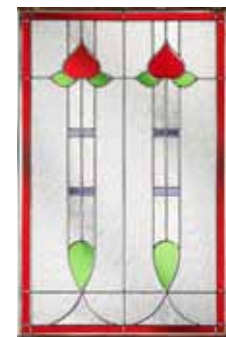
Monza

Grey bevels with various textured glass pieces and zinc caming



Aspen

Grey bevels with various textured glass pieces and zinc caming



Edwardian

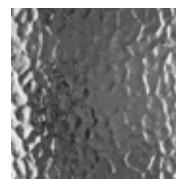
Various coloured and textured glass pieces with zinc caming



Stippolyte



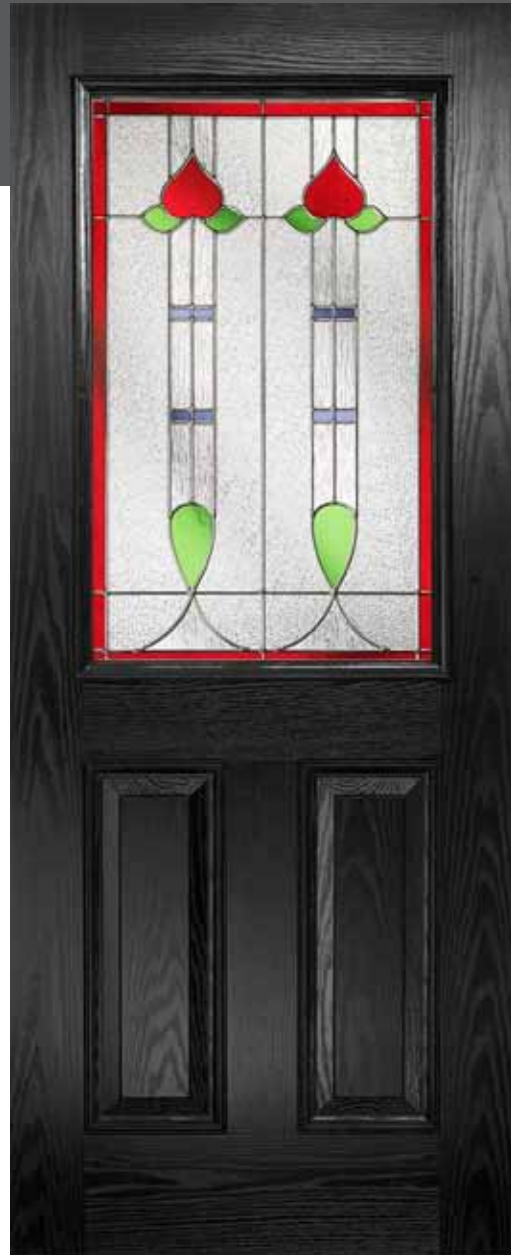
Contora



Minster



Cotswold



Style EL01 | Black | Edwardian Glass (zinc caming)

ELEGANCE ARCH

The scale of the beautiful glazed pane in the Elegance Arch design provides a wonderfully dramatic focal point that welcomes visitors to your home as well as letting light flood in.

GLASS PATTERNS AVAILABLE



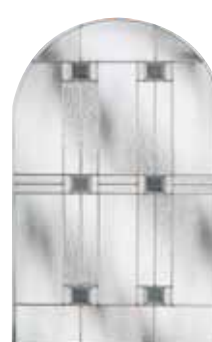
Kara

Glue chip backing glass with clear bevels and brass or zinc caming



Monza

Grey bevels with various textured glass pieces and zinc caming



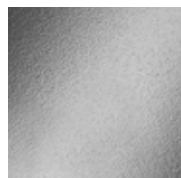
Aspen

Grey bevels with various textured glass pieces and zinc caming



Edwardian

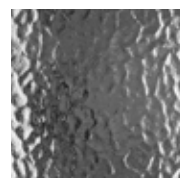
Various coloured and textured glass pieces with zinc caming



Stippolyte



Contora



Minster



Cotswold

Style EL02 | Black | Aspen Glass (zinc caming)

ESTEEM

Our Esteem range offers understated style and is ideal if you want your door to make a statement of quiet confidence.

GLASS PATTERNS AVAILABLE



Kara

Glue chip backing glass with clear bevels and brass or zinc caming



Monza

Grey bevels with various textured glass pieces and zinc caming



Aspen

Grey bevels with various textured glass pieces and zinc caming

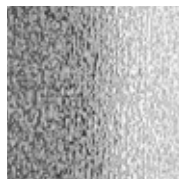


Edwardian

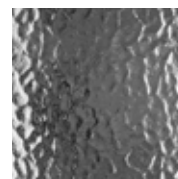
Various coloured and textured glass pieces with zinc caming



Stippolyte



Contora



Minster



Cotswold

Style ES02 | Pastel Green | Aspen Glass (zinc caming)

CRAFTSMAN

The Craftsman design is perfect for maintaining privacy but will also allow the light to fill your home.

GLASS PATTERNS AVAILABLE



Kara

Glue chip backing glass with clear bevels and brass or zinc caming



Aspen

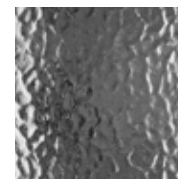
Grey bevels with various textured glass pieces and zinc caming



Stippolyte



Contora



Minster



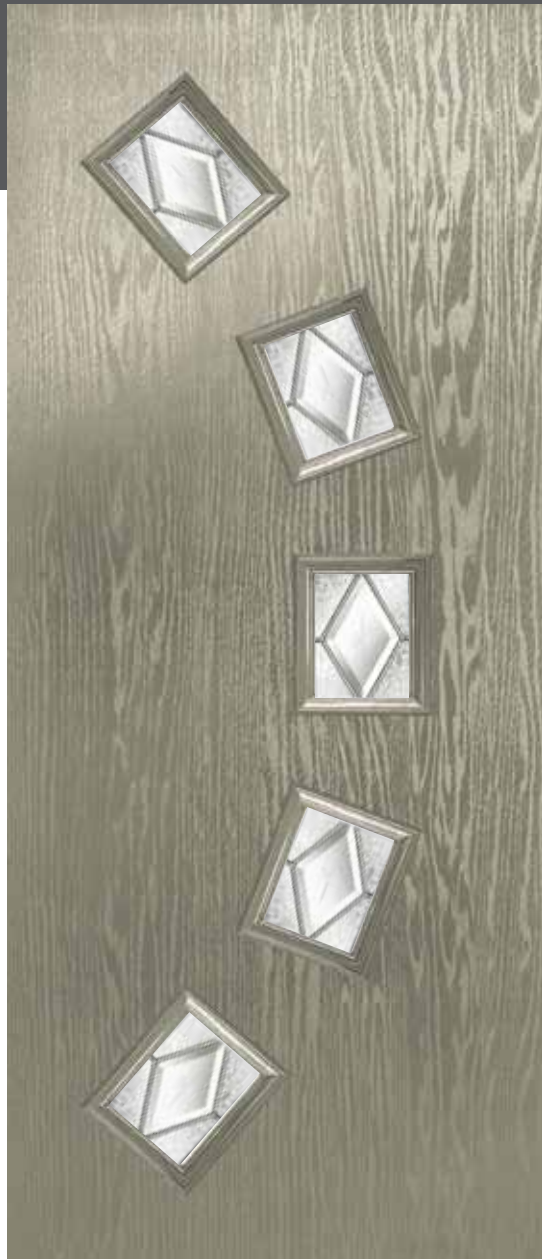
Cotswold



Style EC05 | White | Kara Glass (zinc caming)

ABSTRACT

With a sweeping curve of glazed panes, the Abstract design is a perfect example of how you can make an instant bold statement and modernise the entrance to your home.



Style C07(L) | Olive Yellow | Kara Glass (zinc caming)



Style C07(R) | Azure Blue
Kara Glass (zinc caming)

GLASS PATTERNS AVAILABLE



Kara

Glue chip backing glass with clear bevels and brass or zinc caming



Monza

Grey bevels with various textured glass pieces and zinc caming



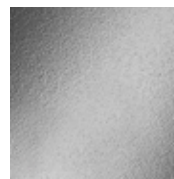
Aspen

Grey bevels with various textured glass pieces and zinc caming



Edwardian

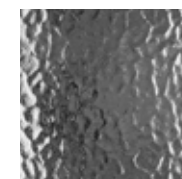
Various coloured and textured glass pieces with zinc caming



Stippolyte



Contora



Minster



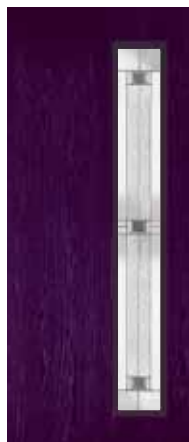
Cotswold



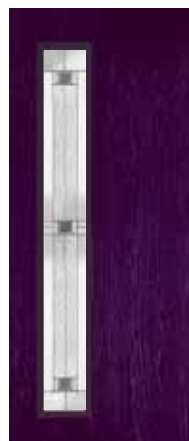
Style C12(C) | Mouse Grey | Aspen Glass (zinc coming)

BLADE

With near to full height glazing this design maintains a contemporary look whilst allowing light to flood in. The Aspen glass completes the contemporary look with clean lines and a strong geometric design.



Style C12(R) | Purple Violet
Aspen Glass (zinc coming)



Style C12(L) | Purple Violet
Aspen Glass (zinc coming)

GLASS PATTERNS AVAILABLE



Aspen
Grey bevels with various
textured glass pieces
and zinc coming



Monza
Grey bevels with various
textured glass pieces
and zinc coming



Trieste
Trieste glass pattern is
only available on the
Blade door design

DECORATIVE GLAZING

THE PERFECT FINISHING TOUCH AND A BEAUTIFUL FOCAL POINT.



Style C22 | Traffic Grey | Aspen Glass (zinc caming)

JEWEL

Like wearing a single piece of jewellery, our Jewel design has a small decorative glazing panel that makes a big statement. It welcomes visitors with delicate visual interest and brings a gleam of light into your home.

GLASS PATTERNS AVAILABLE



Kara

Glue chip backing glass with clear bevels and brass or zinc caming



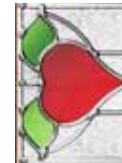
Monza

Grey bevels with various textured glass pieces and zinc caming



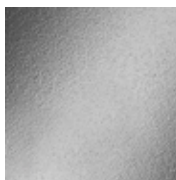
Aspen

Grey bevels with various textured glass pieces and zinc caming



Edwardian

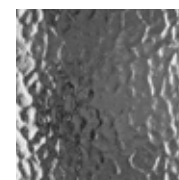
Various coloured and textured glass pieces with zinc caming



Stippolyte



Contora



Minster



Cotswold



Style C19 | Silk Grey | Monza Glass (zinc coming)

PENDANT

Our Pendant design offers understated style and is the ideal solution for a back door, yet is a perfect choice for a front door too.

GLASS PATTERNS AVAILABLE



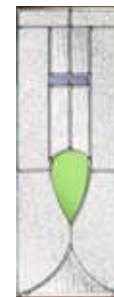
Kara
Glue chip backing glass with clear bevels and brass or zinc coming



Monza
Grey bevels with various textured glass pieces and zinc coming



Aspen
Grey bevels with various textured glass pieces and zinc coming



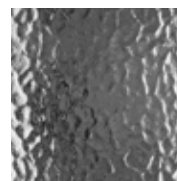
Edwardian
Various coloured and textured glass pieces with zinc coming



Stippolyte



Contora



Minster



Cotswold



Style C09(C) | Purple Violet | Aspen Glass (zinc caming)

MOTIF

The Motif design highlights the simple repeated linear glazing that can be positioned centrally or to the right or left of the door. This decision will often be influenced by the design and symmetry of your surrounding property.



Style C09(R) | Sky Blue
Monza Glass (zinc caming)



Style C09(L) | Mouse Grey
Monza Glass (zinc caming)

GLASS PATTERNS AVAILABLE



Kara

Glue chip backing glass with clear bevels and brass or zinc caming



Monza

Grey bevels with various textured glass pieces and zinc caming



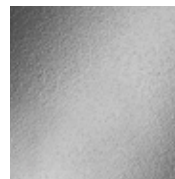
Aspen

Grey bevels with various textured glass pieces and zinc caming



Edwardian

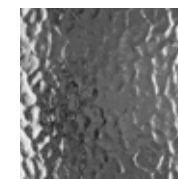
Various coloured and textured glass pieces with zinc caming



Stippolyte



Contora



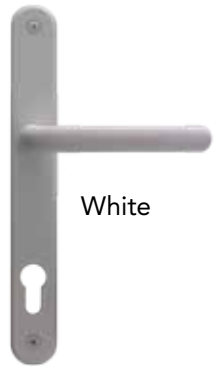
Minster



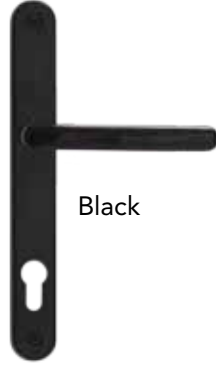
Cotswold

FURNITURE

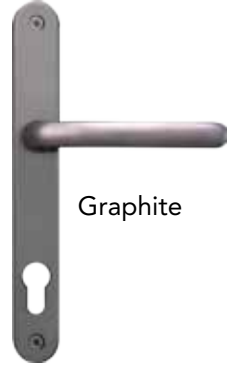
Door Handle Options



White



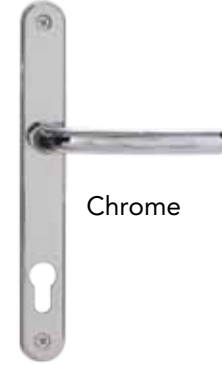
Black



Graphite



Gold



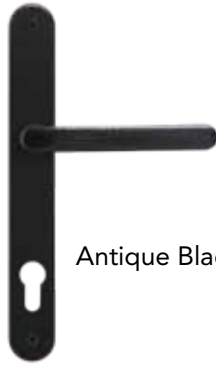
Chrome



Satin



Bronze



Antique Black



Antique Black
Swan Neck
(available in all
finish options)



Pad Handle
(available in all
finish options)



Victorian and Slim Victorian
Urn Knockers
(available in all finish options)



Escutcheon
Finger Pull
(available in all
finish options)

Letter Box Options



White



Black



Graphite



Gold



Chrome



Satin



Bronze



Antique Black

ADDITIONAL FURNITURE OPTIONS

Bull Ring Knockers

Great design is all about the detail.

Our specialist range of Bull Ring Knockers will provide the finishing touches and all important kerb appeal.

This functional yet aesthetically pleasing knocker is available in the same finish options as the door handles and letter boxes shown overleaf.



Antique Black



White



Black



Graphite



Gold



Chrome



Bronze

Ornate Door Knobs

This elegant range is available in both Polished Chrome and Polished Brass.

(Please note:- These options are not a match for door handles and letter boxes shown)



Umbrella Knob



Dome Knob



FINISHING TOUCHES

ELEGANT DOOR FURNITURE THAT ADDS A SENSE OF GRANDEUR

Contemporary Pull Bar Handles

The Ultimate Contemporary Collection can be enhanced further with the addition of brushed stainless steel offset pull bar handles.

You have the choice of bar length from 400mm minimum length up to 1800mm maximum length and everything in between in multiples of 200mm.



Style C09(R) | White | Aspen Glass (zinc coming)

Construction

Every 70mm Ultimate Composite Door is manufactured to the highest of standards to ensure it is strong, durable and secure.

The door has a perimeter sub-frame of a solid, water-resistant polymer material, which is reinforced with Laminated Veneered Lumber (LVL).

A thermoset GRP skin is bonded to this sub-frame and the core of the door is then filled with high density, 100% CFC-free polyurethane foam. Water resistant polymer composite rails protect the core from damage or water absorption.

The door's core is what makes it so thermally efficient and so good at reducing sound. In fact, as you can see from the images on page 4, it is amongst the most thermally efficient door on the market, increasing your home's energy efficiency and saving you money on your energy bills.

The high impact resistant thermoset GRP skin not only keeps your door looking good, it will not expand and contract laterally so your door will not crack or delaminate. All colours are over sprayed with a durable paint that will not peel or crack.

Technical figures

The 70mm Ultimate Composite Door has a wealth of facts and figures that prove its quality. The door:

- achieves BS 6375-1 for weather tightness, air, wind and water
- reduces outdoor noise by an average of 31dB
- achieves Global Warming Potential (GWP) score of less than 5
- achieves Ozone Depletion Potential (ODP) score of zero
- meets UK Building Regulations U value requirements of 1.6 W/M2K

In other words, everything about the Ultimate 70mm composite door has been designed to enhance your home for years to come.

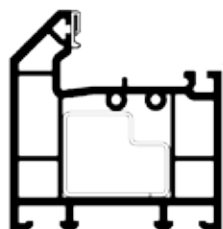
Care & Maintenance

Your 70mm Ultimate Composite Door has been designed to be easy to maintain. To keep your door clean, prolong the life of the surface finish and protect your warranty, we recommend you wash it regularly using warm soapy water (washing up liquid is ideal) and a soft, lint-free cloth. If you live in a coastal area, in a heavily industrialised area or near a main road, you may need to clean your door more frequently.

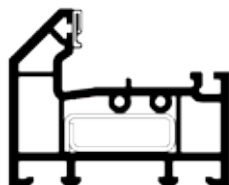
It is important that you DO NOT use any of the following on your door:

- abrasive cleaners or scouring pads
- any type of bleach or solvent (e.g. white spirit, methylated spirit, cellulose thinners, acetone or nail varnish remover)
- any type of adhesives or tack for providing temporary protection or fixing of seasonal or other decorations
- high pressure or steam cleaners

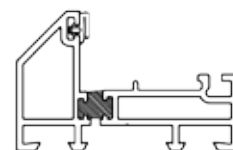
Threshold Options



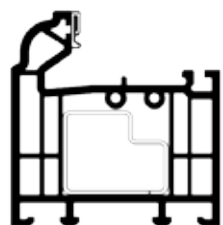
72MM PVC-U THRESHOLD
(BEVELLED)



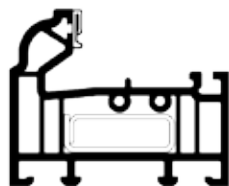
56MM PVC-U THRESHOLD
(BEVELLED)



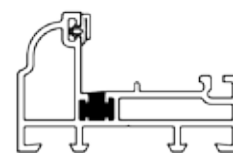
44MM ALUMINIUM THRESHOLD
(BEVELLED)



72MM PVC-U THRESHOLD
(OVOLO)



56MM PVC-U THRESHOLD
(OVOLO)



44MM ALUMINIUM THRESHOLD
(OVOLO)



STORMGUARD PART M COMPLIANT
AM5 OUTWARD OPENING THRESHOLD
(AM3 inward opening also available)

Door and glass colours shown in this brochure should be used for guidance only as the limitations in photographic and printing processes may mean that colours of products vary from those illustrated. All information in this publication is provided for guidance only and is given in good faith. We reserve the right to alter specifications without prior notice.

Reproduction of this brochure in whole or part is strictly forbidden without prior written consent. All images are for illustration purposes only.

Published by John Fredericks Plastics June 2020.



70mm Dual Rebate Composite Doors