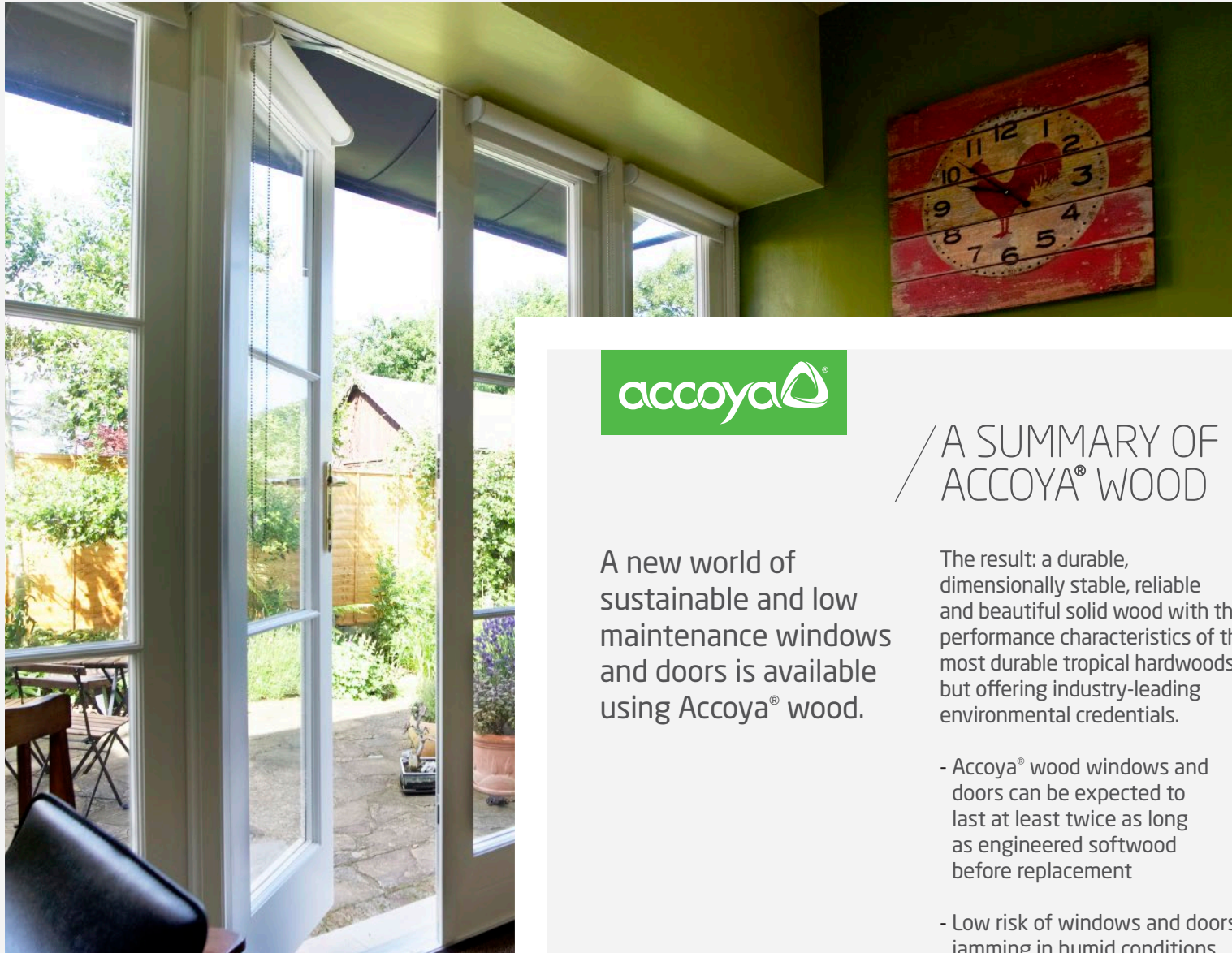




SOLLEX PRODUCTS LTD

SOLLEX



/ A SUMMARY OF ACCOYA® WOOD

A new world of sustainable and low maintenance windows and doors is available using Accoya® wood.

The result: a durable, dimensionally stable, reliable and beautiful solid wood with the performance characteristics of the most durable tropical hardwoods, but offering industry-leading environmental credentials.

- Accoya® wood windows and doors can be expected to last at least twice as long as engineered softwood before replacement
- Low risk of windows and doors jamming in humid conditions

- Coating maintenance intervals can be expected to be twice as long on Accoya® wood
- Accoya® wood windows and doors contain no biocides
- Thermal conductivity is improved in comparison with softwoods and hardwoods
- Accoya® window frames are now classified as Carbon Negative over their full life cycle



ABOUT SOLLEX PRODUCTS LTD

/ Our range
Original Sash
Sash Windows
Casement Windows
Doors
Refurbishment

Sollex is a family business with a customer focus and a reputation as one of London's leading timber window and door suppliers. We have over 30 years' experience in window and door manufacturing, including a great deal of experience working in conservation areas and in Grade II listed buildings, and have installed over 30,000 bespoke timber windows and doors across London and the South East.

Unlike many of our competitors we manufacture, sell and fit all of our windows, which allows us complete control of the process from start to finish.



INNOVATION IN WOOD

KEY FEATURES



**DIMENSIONALLY
STABLE**



**OUTSTANDING
DURABILITY**



**IDEAL FOR
COATING**

Accoya® wood is produced from sustainably sourced, fast growing wood and manufactured using Accsys' proprietary patented modification process from surface to core.



**BAREFOOT
FRIENDLY**



**NATURALLY
INSULATING**



**EXCELLENT
MACHINABILITY**



**INSECT
BARRIER**



**CONSISTENT
QUALITY
THROUGHOUT**



**NATURALLY
BEAUTIFUL
WOOD**



**FROM
SUSTAINABLE
SOURCES**



**RETAINED
STRENGTH &
HARDNESS**



**NON-TOXIC &
RECYCLABLE**

SOLLEX

Sollex Products Ltd
Unit 1
Oliver Business Park
Oliver Road
London, NW10 7JB
T: 02071000900
E: enquiry@sollex.co.uk

www.sollex.co.uk

www.accoya.com



Accoya® and the Trimarque Device are registered trademarks owned by Titan Wood Limited, a wholly owned subsidiary of Accsys Technologies PLC, and may not be used or reproduced without written permission.

Accoya® wood should always be installed and used in accordance with the written instructions and guidelines of Accsys Technologies and/or its agents (available upon request). Accsys Technologies accepts no liability for any defect, damage or loss that may occur where such written instructions and guidelines are not adhered to.

The information contained within this document has not been independently verified, and no warranty (express or implied) or representation is given in respect of the same, including without limitation as to its accuracy, completeness or fitness for any purpose. Accsys Technologies and its affiliates, officers, employees or advisers expressly disclaim any liability to the fullest extent permitted by law for any loss or damage whatsoever arising in respect of such information or the result of having acted upon it.



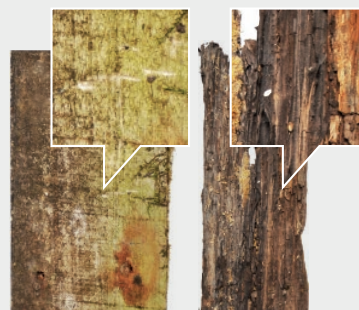
OUTSTANDING DURABILITY

Accoya® wood's durability (rot resistance) is Class 1, matching and even exceeding the performance of nature's most durable woods such as Oak, Teak, Iroko and Sapele. Every batch of Accoya® wood is tested after production to ensure that its durability can be guaranteed.

The Accoya® advantage:

- Joinery that will stand the test of time and not require replacement for at least 60 years**
- Use in demanding external applications, even in fresh water
- Beauty, elegance and style - natural or coated

SHEET PILING

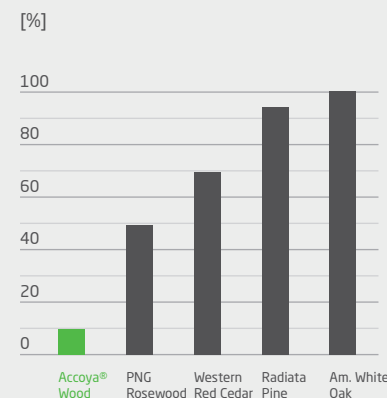


Acetylated Poplar *

Unmodified Wood

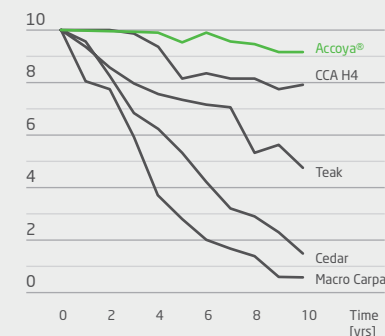
After 10 years in fresh water

TERMITE MASS LOST TEST

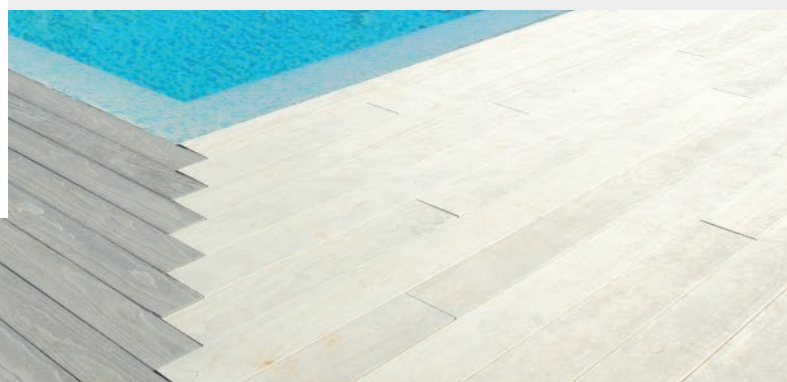


Mastotermes darwiniensis is the most destructive species of Australian termite and active north of the Tropic of Capricorn. Hazard Class 3 above ground testing was set up in Northern Territory, Australia according to the AWPA protocol by the Australian Forest Research Company.

OUTDOOR STAKE TEST



Based on ASTM D 1758. Decay rates in outdoor stake test range from 0 (failed) up to 10 (no decay or insect damage)



SOLLEX

Sollex Products Ltd
Unit 1, Oliver Business Park, Oliver Road
London, NW10 7JB
T: 02071000900
E: enquiry@sollex.co.uk

WWW.SOLLEX.CO.UK



DIMENSIONALLY STABLE

Accoya® wood's superior dimensional stability (resistance to swelling and shrinkage) exceeds all commonly used species, including Teak, Sapele and Iroko. Accoya® wood has been tested over prolonged periods in all types of weathering conditions - above ground, below ground and even in water - and has been proven to withstand even the toughest of external environments.

The Accoya® advantage:

- Reduced swelling and risk of jamming in humid conditions
- Better fitting windows and doors in all weathers
- Less frequent coatings maintenance

TRADA TRIAL RESULTS

Accoya® wood was the only wood that did not cup in this TRADA** trial on wooden cladding.



REDUCED SWELLING

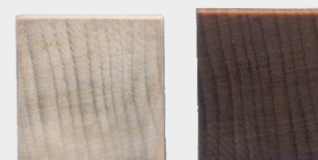
Acetylated wood*

Oven-dry Water saturated

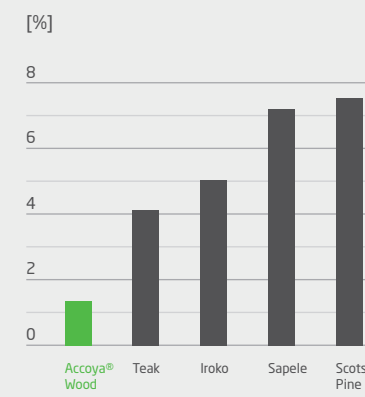


Unmodified wood

Oven-dry Water saturated



TANGENTIAL SHRINKAGE



Typical tangential shrinkage from fully soaked to oven dry - the most extreme laboratory test.



SOLLEX

Sollex Products Ltd
Unit 1, Oliver Business Park, Oliver Road
London, NW10 7JB
T: 02071000900
E: enquiry@sollex.co.uk

WWW.SOLLEX.CO.UK

* Accoya® wood is made using a modification process called acetylation

** Timber Research and Development Association www.trada.co.uk

© Accsys Technologies April 2017. Accoya and the Trimarque Device are registered trademarks owned by Titan Wood Limited, a wholly owned subsidiary of Accsys Technologies PLC, and may not be used or reproduced without written permission.



IDEAL
FOR COATING

Accoya® wood has shown improved coating lifetime performance with many types of coatings, resulting in extended maintenance intervals. The light colour of Accoya® wood allows for a wide range of colour finishes. Improved stability means film-forming coating systems last up to two times longer. Accoya® wood is easier to coat, less preparation and sanding is required.

The Accoya® advantage:

- Potential for less frequent coatings maintenance
- Cost savings during the life of the product
- Environmental benefits during the life of the product
- Wider range of colour and coatings options

COATING COMPARISON AFTER 13 YEARS OUTDOOR EXPOSURE

Translucent WB Acrylic Coating

Acetylated wood*



Unmodified wood



Opaque WB Acrylic Coating

Acetylated wood*



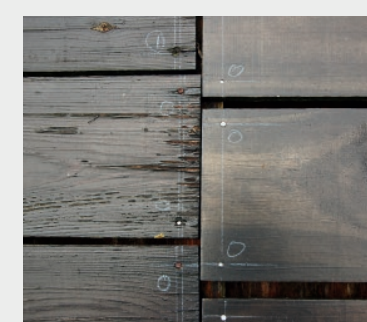
Unmodified wood



TRADA COATING TEST

42 months outdoor exposure

Pine



Accoya® wood

Accoya® wood outperformed pine boards showing excellent coating performance.



SOLLEX

Sollex Products Ltd
Unit 1, Oliver Business Park, Oliver Road
London, NW10 7JB
T: 02071000900
E: enquiry@sollex.co.uk

WWW.SOLLEX.CO.UK



SUSTAINABLE
CHOICE

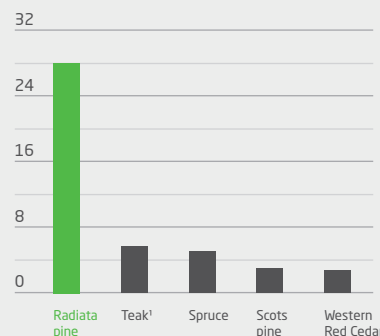
By significantly enhancing the durability and dimensional stability of fast growing, abundantly available certified wood species, Accoya® wood provides compelling environmental advantages over scarce slow growing hardwoods, woods treated with toxic chemicals, and non-renewable carbon-intensive materials such as plastics, steel and concrete.

The Accoya® advantage:

- Always sustainably sourced from abundantly available, often fast growing wood species
- Use phase advantages: increased life span, less maintenance, superior thermal insulation
- Non toxic and 100% recyclable – a perfect fit with the bio-cycle of the C2C philosophy
- CO₂ negative over the full life cycle

ANNUAL YIELD

[m³ / ha / year]

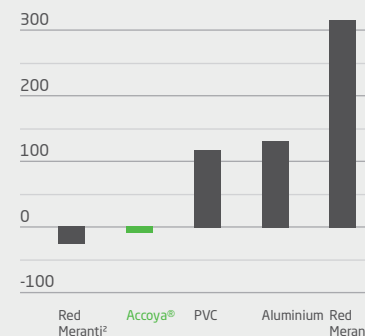


Annual yield comparison of species in cubic meters of wood produced per hectare per year

¹ Plantation grown

CARBON FOOTPRINT

[kg CO₂ eq / window frame]



Greenhouse gas emissions (cradle to grave) in kg CO₂ eq per window frame in various material alternatives

² Sustainably sourced
³ Unsustainably sourced

ECOLABELS

Accoya® wood has been awarded various accreditations and eco-certifications further highlighting its unique sustainability properties.



BREEAM®

LEEDv4: MR1, MR2, MR3, MR4 I1
BREEAM: MAT 1, MAT 5

Read more on www.accoya.com/sustainability



SOLLEX

Sollex Products Ltd
Unit 1, Oliver Business Park, Oliver Road
London, NW10 7JB
T: 02071000900
E: enquiry@sollex.co.uk

WWW.SOLLEX.CO.UK